

Innovation Learning Cutting edge Greater Future Community Mental Health partnerships Potential EMPOWERMENT **Healthy** COMMUNITY REACHING Connection Positive Healthcare System **Stronger** Priorities CHALLENGES Moving Ahead possibilities **Business** *promise* **FOUNDATION** WELLNESS IMPLEMENTATION MENTAL HEALTH MATTERS

40 Years of Improving Lives

Journey INTEGRATION Behavioral Health physical health *Success* PROGRESS Reform

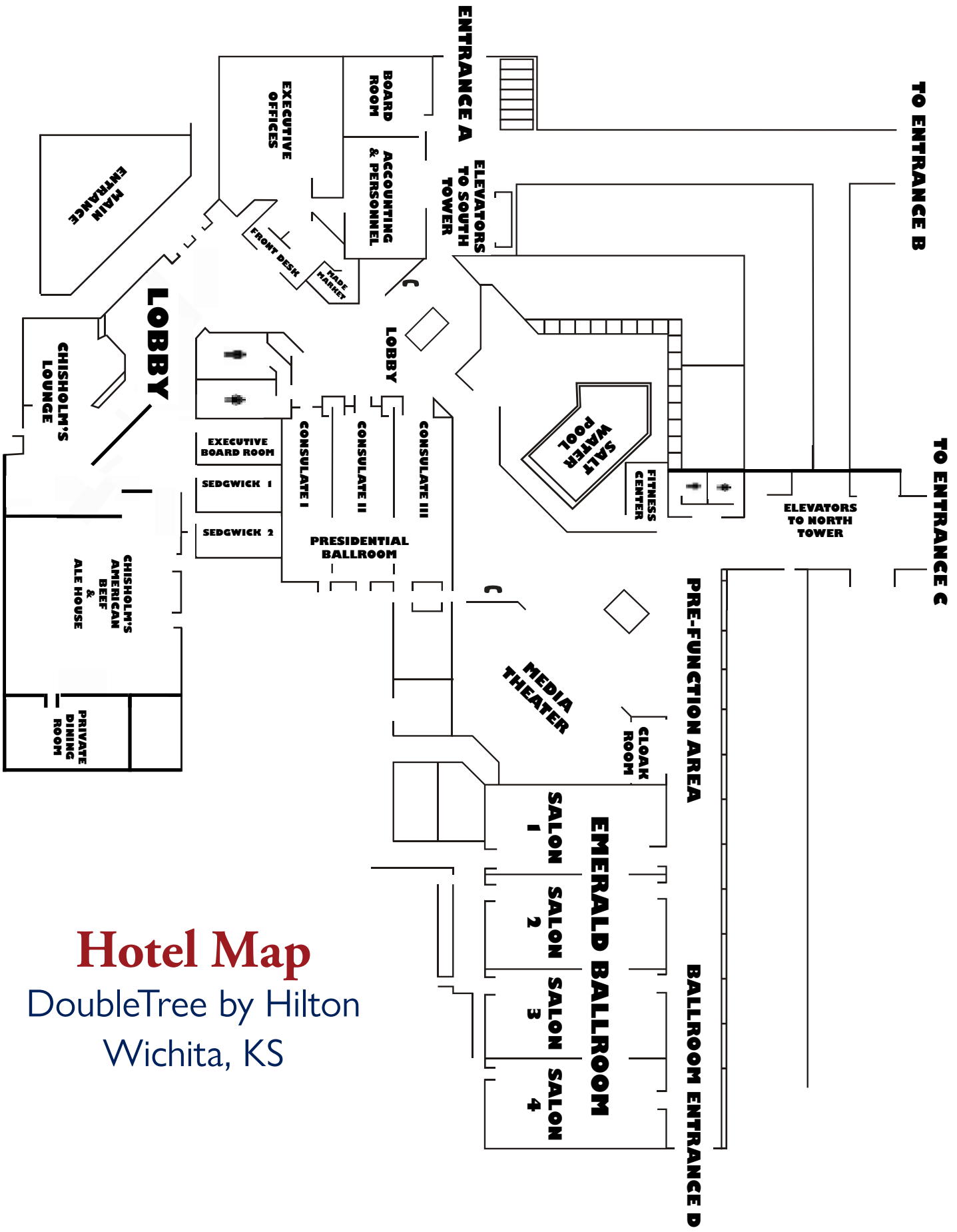


40th Annual Conference for Behavioral Health

September 11-13, 2019

#KSBHCON19
www.acmhck.org

DoubleTree by Hilton
Wichita, KS



Hotel Map

DoubleTree by Hilton
Wichita, KS

Innovation Learning cutting edge Greater Future Community Mental Health partnerships Potential EMPOWERMENT **Healthy** MENTAL HEALTH MATTERS

Direction COMMUNITY REACHING Connection Moving Ahead possibilities **Business** Healthcare System **Stronger** Priorities

promise CHALLENGES FOUNDATION

Wellness Implementation



September 11-13, 2019

DoubleTree by Hilton
Wichita, KS

40 Years of Improving Lives

Table of Contents

Welcome!.....	2
Schedule-at-a-Glance.....	4
Continuing Education.....	5
TUESDAY, SEPTEMBER 10, 2019	7
Schedule-at-a-Glance.....	7
Pre-conference Session.....	7
WEDNESDAY, SEPTEMBER 11, 2019	8
Schedule-at-a-Glance.....	8
AM Breakout Sessions.....	9
PM Breakout Sessions.....	9
THURSDAY, SEPTEMBER 12, 2019	10
Schedule-at-a-Glance.....	10
AM Breakout Sessions.....	10
PM Breakout Sessions.....	11
FRIDAY, SEPTEMBER 13, 2019	12
Schedule-at-a-Glance.....	12
Breakout Sessions.....	12
Notes.....	13
Exhibitor.....	20
Thank You to Our Sponsors.....	21

Conference Basics



Need Assistance or have questions? Stop by the Registration Table located in the Lobby at any time during the conference and we can help.



Share your conference experience on social media using #KSBHCON19.

Tag us on Twitter @acmhck.



Follow us on Facebook at Association of Community Mental Health Centers of Kansas.



40th Annual Conference for Behavioral Health

www.acmhck.org

Welcome to the 2019 Annual Conference for Behavioral Health!

This event marks the 40th annual conference. Our strength comes from our members and community partners as we all work to improve the lives and health of others.

We have worked to develop a conference program that includes topics not only appropriate to traditional treatment, prevention, and education strategies for you to use in communities across our great state but also innovative medical, clinical, and policy initiatives as well. Simply stated, this conference has something for everyone involved anywhere in the field of behavioral health in Kansas.

We hope that over the next three days, you will have the opportunity to meet new colleagues and reacquaint yourself with familiar ones from across the state, acquire knowledge from national and regional experts, and reenergize yourself in a meaningful learning environment. We want our system to be a sought-after destination for long-term employment growth and satisfaction. This is part of our continuous effort to be the best behavioral health system in the country, which is an unwavering goal.

We would like to highlight and express our appreciation to our 2019 conference sponsors. ACMHCK is able to provide this learning opportunity because of the valued partnership between our organizations and our sponsors. The Annual Conference for Behavioral Health is made possible with the continued support of our Platinum Sponsors including innovaTel, Compliance One, and Sunflower Health Plan; Gold Sponsors including Qualifacts, Aetna, Conrade Insurance Group, KVC Hospitals, Mid-America Mental Health Technology Transfer Center, and United Healthcare Community Plan; Reception Sponsor including Remarkable Health; Refreshment Break Sponsors including Genoa and Conrade Insurance Group, and; Silver Sponsors including Netsmart; and Bronze Sponsors including Streamline Healthcare Solutions and Johnson County Mental Health Center. Furthermore, funding for presenters was provided in part by Kansas Health Foundation.

Recognizing our 40th annual conference as a milestone for our system is important especially as it relates to the key themes that have been used in previous conferences. These are referenced in this year's conference program cover. This ties together a common theme for not only those patients or clients we serve and their families but our system's respective employees, leaders, and board members. This theme is resilience. We persist through day-to-day struggles with recovery, challenging budget and political climates, and a shortage of human and financial resources. Resilience and persistence are reflective of inspired and innovative leadership in communities around Kansas. *Enjoy the conference!*

Executive Director
Association of CMHCs of Kansas

PROGRESS
Reform
Moving
Ahead
Healthy
Business
Behavioral
Health
possibilities
promise
COMMUNITY
physical
health
EMPOWERMENT
Priorities
MENTAL
HEALTH
MATTERS
Journey
Wellness
STRONGER
Potential
Success

Future
Innovation
Learning

Association of Community Mental Health Centers of Kansas, Inc.



“Meeting the behavioral health needs of Kansans”

Kyle Kessler, *Executive Director*

Heather Elliott, *Member Services Manager*

Michelle Ponce, *Associate Director*

Sue Murnane, *Clinical Integration Manager*

Kay Swietek, *Executive Assistant*

Bert Nash Community Mental Health Center – Est. 1950

Patrick Schmitz, CEO

Central Kansas Mental Health Center – Est. 1964

Kathy Mosher, Executive Director

COMCARE of Sedgwick County – Est. 1961

Joan Tammany, Executive Director

Community Mental Health Center of Crawford County – Est. 1968

Rick Pfeiffer, Executive Director

Compass Behavioral Health – Est. 1961

Lisa Southern, Executive Director

CrossWinds Counseling and Wellness – Est. 1960

Amanda Cunningham, CEO

Elizabeth Layton Center – Est. 1961

Leslie Bjork, Executive Director

Family Service and Guidance Center – Est. 1904

Brenda Mills, CEO

Four County Mental Health Center – Est. 1964

Greg Hennen, Executive Director

High Plains Mental Health Center – Est. 1964

Walter Hill, Executive Director

Horizons Mental Health Center – Est. 1968

Michael Garrett, CEO

Iroquois Center for Human Development – Est. 1968

Ric Dalke, Executive Director

Johnson County Mental Health Center – Est. 1962

Tim DeWeese, Director

Kanza Mental Health and Guidance Center – Est. 1963

David Jasper, CEO

Labette Center for Mental Health Services – Est. 1979

Matthew Atteberry, Executive Director

Pawnee Mental Health Services – Est. 1956

Robbin Cole, Executive Director

Prairie View, Inc. – Est. 1954

Jessie Kay, President & CEO

South Central Mental Health Counseling Center, Inc. – Est. 1962

Dan Rice, Executive Director

Southeast Kansas Mental Health Center – Est. 1965

Nathan Fawson, Executive Director

Southwest Guidance Center – Est. 1937

Leslie Bissell, Executive Director

Spring River Mental Health and Wellness – Est. 1981

Stacy Manbeck, Executive Director

Sumner Mental Health Center – Est. 1983

Rick Gaskill, Executive Director

The Center for Counseling and Consultation – Est. 1967

Julie Kramp, Executive Director

The Guidance Center – Est. 1937

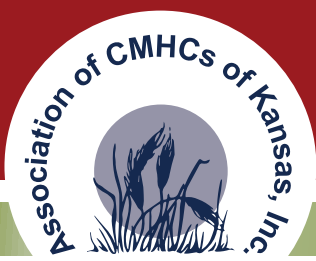
Keith Rickard, Executive Director

Valeo Behavioral Health Care – Est. 1967

Bill Persinger, CEO

Wyandot Center for Community Behavioral Health Care – Est. 1953

Randy Callstrom, President/CEO



40th Annual Conference for Behavioral Health

www.acmhck.org

Schedule-at-a-Glance

TUESDAY, SEPTEMBER 10, 2019

- 9:00 a.m. – 12:00 p.m. Pre-conference Session
- 3:00 p.m. – 6:00 p.m. Registration & Exhibitors Open

WEDNESDAY, SEPTEMBER 11, 2019

- 7:00 a.m. – 5:00 p.m. Registration
- 7:00 a.m. – 8:00 a.m. Breakfast Buffet
- 8:00 a.m. – 9:15 a.m. General Session
- 9:15 a.m. – 9:30 a.m. Coffee Break
- 9:15 a.m. – 10:00 a.m. Book Signing – Sam Quinones
- 9:30 a.m. – 11:00 a.m. Breakout Session
- 11:00 a.m. – 11:15 a.m. Break
- 11:15 a.m. – 12:15 p.m. General Session
- 12:15 p.m. – 12:45 p.m. Lunch & Networking
- 12:45 p.m. – 1:45 p.m. General Session
- 1:45 p.m. – 2:00 p.m. Refreshment Break
Sponsored by Genoa Healthcare
- 1:45 p.m. – 2:30 p.m. Book Signing – Patrick J. Kennedy
- 2:00 p.m. – 3:30 p.m. Breakout Session
- 3:30 p.m. – 3:45 p.m. Break
- 3:45 p.m. – 5:00 p.m. Breakout Session
- 4:30 p.m. – 6:00 p.m. Welcome Reception
Sponsored by Remarkable Health

THURSDAY, SEPTEMBER 12, 2019

- 7:00 a.m. – 5:00 p.m. Registration
- 7:00 a.m. – 8:00 a.m. Breakfast Buffet
- 8:00 a.m. – 9:15 a.m. General Session and Awards
- 9:15 a.m. – 9:30 a.m. Coffee Break
- 9:30 a.m. – 11:00 a.m. Breakout Session
- 11:00 a.m. – 11:15 a.m. Coffee Break
- 11:15 a.m. – 12:45 p.m. Breakout Session
- 12:45 p.m. – 1:45 p.m. Lunch Buffet & Networking
- 1:45 p.m. – 3:15 p.m. Breakout Session
- 3:15 p.m. – 3:30 p.m. Refreshment Break
Sponsored by Conrade Insurance Group
- 3:30 p.m. – 5:00 p.m. Breakout Session

FRIDAY, SEPTEMBER 13, 2019

- 8:00 a.m. – 12:00 p.m. Registration
- 8:00 a.m. – 9:00 a.m. Continental Breakfast
- 8:45 a.m. – 12:00 p.m. Breakout Session
- 8:45 a.m. – 12:30 p.m. Mental Health First Aid Instructor Summit
- 9:00 a.m. – 12:00 p.m. *OPEN MINDS* Executive Seminar
Sponsored by Qualifacts



Continuing Education

OVERVIEW:

The Annual Conference for Behavioral Health provides educational opportunities to increase awareness of emerging trends, build skills and knowledge to provide behavioral health care, and advocate for policy change.

TARGET AUDIENCE:

Behavioral health providers including executive leaders, physicians, clinicians, nurses, social workers, therapists, and other healthcare providers.

OBJECTIVES:

At the completion of this conference, participants should be able to:

- Define Trauma Informed Care
- Identify common challenges that present in the treatment of co-occurring disorders.
- Evaluate recent policy changes impacting behavioral health.
- Recall resources for behavioral health treatment and intervention services that are available in the state of Kansas.
- Discuss barriers that different populations face in access to care.
- List ethical conflicts that can arise during treatment.

ACCREDITATION & CONTINUING EDUCATION CONTINUING EDUCATION CREDIT:

The following breakout sessions are not eligible for CME, CNE, or Social Work Credit:

- All sessions on the Board, Leadership, Finance track
- The New World of Health Care – Applying the Social Determinants of Health

Physicians: This activity has been planned and implemented in accordance with the accreditation requirements and policies of the Accreditation Council for Continuing Medical Education (ACCME) through the joint providership of University of Kansas Medical Center Office of Continuing Education and Professional Development and Association of Community Mental Health Centers of Kansas. The University of Kansas Medical Center Office of Continuing Education and Professional Development is accredited by the ACCME to provide continuing medical education for physicians.

The KU Medical Center Office of Continuing Medical Education designates live activity for a maximum of 20 *AMA PRA Category 1 Credit(s)*[™]. Physicians should claim only the credit commensurate with the extent of their participation in the activity.

APRNs/Nurses: The University of Kansas Medical Center Area Health Education Center West is approved as a provider of CNE by the Kansas State Board of Nursing. This course offering is approved for 24.0 contact hours applicable for APRN, RN, or LPN relicensure. Kansas State Board of Nursing provider number: LT0086-1149. Karen Aufdemberge, BSN, RN, Coordinator.

*Continuing education credit will be issued according to documented attendance. Breakout sessions must be attended in their entirety to claim credit.

Social Workers: The University of Kansas Medical Center Area Health Education Center East, as an approved provider of continuing education by the Kansas Behavioral Sciences Regulatory Board presents this offering for a maximum of 22.75 hours credit applicable for relicensure of LASWSs, LBSWs, LMSWs and LSCSWs. Kansas Provider Number 12-002. Karen Aufdemberge BSN, RN, coordinator.

*Continuing education credit will be issued according to documented attendance. Breakout sessions must be attended in their entirety to claim credit.

Psychologists/Counselors/Other: Attendees will receive a certificate of attendance which can be submitted to their licensing boards.

PROCEDURE FOR PROGRAM EVALUATION AND CONTINUING EDUCATION

To receive CEs for this program all attendees must sign in at the registration table at the start of each day. Information will be provided on site regarding how to complete your evaluation and obtain your continuing education certificate.



Sunflower Health Plan

Proud Sponsor of the 2019 Annual
Conference for Behavioral Health

Healthier today, Better tomorrow

SunflowerHealthPlan.com
1-877-644-4623 (TTY 711)



Tuesday, September 10, 2019

SCHEDULE-AT-A-GLANCE

Time	Session	Location
9:00 a.m. – 12:00 p.m.	PRE-CONFERENCE SESSION	Salon 4
3:00 p.m. – 6:00 p.m.	Registration	Lobby
3:00 p.m. – 6:00 p.m.	Exhibits Open	Pre-function Area

PRE-CONFERENCE SESSION

EXPERT TESTIMONY: HOW TO CONSTRUCT YOUR OPINION/TESTIMONY

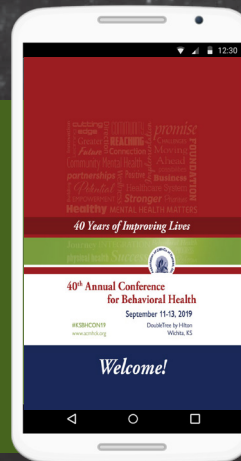
Presented by: *The Honorable Thomas Graber; Richard L. Gaskill, EdD, LCPC, LCP; Jeanne M. Brown, MA, LCP, RPT/S*
Salon 4

Download the Mobile App Now!

<https://crowd.cc/s/2SINe>

Once you have clicked the link or scanned the QR code to download **CrowdCompass Attendee Hub**

1. Download the event **Annual Conference for Behavioral Health** within the App.
2. Create your profile to explore all the features and content. To do so please click on Hamburger Icon on the top left.
3. Click on **log in**, Enter the details and wait for the **verification code**
4. Enter the Code from your registered e-mail and your Profile is ready.



Scan this code with a QR reader to easily download the app.

 **CrowdCompass** by Cvent



40th Annual Conference for Behavioral Health

www.acmhck.org

Wednesday, September 11, 2019

SCHEDULE-AT-A-GLANCE

Time	Session	Location
7:00 a.m. – 5:00 p.m.	Registration	Lobby
7:00 a.m. – 8:00 a.m.	Breakfast Buffet	Salons 1, 2, 3
8:00 a.m. – 9:15 a.m.	GENERAL SESSION with Sam Quinones	Salons 1, 2, 3
9:15 a.m. – 9:30 a.m.	Coffee Break	Pre-function Area
9:15 a.m. – 10:00 a.m.	Sam Quinones Book Signing	Lobby
9:30 a.m. – 11:00 a.m.	BREAKOUT SESSION	Multiple Rooms
11:00 a.m. – 11:15 a.m.	Break	Pre-function Area
11:15 a.m. – 12:15 p.m.	GENERAL SESSION with Chuck Ingoglia	Salons 1, 2, 3
12:15 p.m. – 12:45 p.m.	Lunch & Networking	Salons 1, 2, 3
12:45 p.m.–1:45 p.m.	GENERAL SESSION with Patrick J. Kennedy	Salons 1, 2, 3
1:45 p.m. – 2:00 p.m.	Refreshment Break sponsored by Genoa Healthcare	Pre-function Area
1:45 p.m. – 2:30 p.m.	Patrick J. Kennedy Book Signing	Lobby
2:00 p.m.–3:30 p.m.	BREAKOUT SESSION	Multiple Rooms
3:30 p.m. – 3:45p.m.	Break	Pre-function Area
3:45 p.m. – 5:00 p.m.	BREAKOUT SESSION	Multiple Rooms
4:30 p.m. – 6:00 p.m.	Welcome Reception sponsored by Remarkable Health	Salon 4

Wednesday, September 11, 2019

AM BREAKOUT SESSIONS

9:30 A.M. – 11:00 A.M.

Session	Presenter	Location
7 Cups	Abby Callis, PsyD	Sedgwick
Introduction to SPQM	Mike Garrett, MS, LPC	Consulate I
Leadership is a Decision not a Position of Authority	Tim DeWeese, LMSW	Media Theater
The Blurred Lines Between Gambling Disorder and Gaming Disorder	Wiley D. Harwell, D.Min., LPC, IGCC-II	Consulate II
The New World of Healthcare – Applying the Social Determinants of Health	Carol Reynolds, MSPM, PMP	Consulate III

PM BREAKOUT SESSIONS

2:00 P.M. – 3:30 P.M.

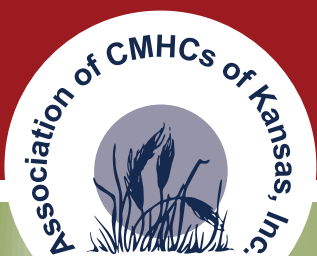
Session	Presenter	Location
42 CFR & HIPAA: What You Need to Know	Dulcinea Rakestraw, MPH, LAC Deb Stidham, MA, LCAC Pat Stilen, MSW	Consulate II
Affirming Care for Transgender and Gender Nonconformant Populations	Ryan Cox, PhD	Salon 4
An Introduction to Telebehavioral Health and Telesupervision	Shawna Wright, PhD, LP	Consulate III
Designing and Implementing Value-Based Care Pathways	jeff Capobianco, PhD, LLP	Consulate I

2:00 P.M. – 5:15 P.M.

Session	Presenter	Location
Anxiety Disorders: Recognition and Response	Abby Callis, PsyD	Media Theater

3:45 P.M. – 5:00 P.M.

Session	Presenter	Location
#Zero Reasons Why: How Teens Are Leading a Countywide Suicide Campaign	Shana Burgess, MSW, CPP Steff Hedenkamp	Consulate II
Developing a Successful Behavioral Health School Program	Doug Wright, PhD Misty Czarnowsky, MS Stacy Hudlin, MS	
No One Wants to Be a Bad Parent – An Overview of Secure Attachment	Lorene Martins, LPC Betsy Scott-Teigen, LSCSW	Consulate III
OneCare Kansas Program Overview for Providers	Rick Hoffmeister, RN	Consulate I
Strengths Plus: A Pilot for People with Co-Occurring Diagnoses	Liz Worth, LSCSW Bryan Knowles, LMSW	Sedgwick



40th Annual Conference for Behavioral Health

www.acmhck.org

Thursday, September 12, 2019

SCHEDULE-AT-A-GLANCE

Time	Session	Location
7:00 a.m. – 5:00 p.m.	Registration	Lobby
7:00 a.m. – 8:00 a.m.	Breakfast Buffet	Salons 1, 2, 3
8:00 a.m. – 9:15 a.m.	GENERAL SESSION with Kim Colegrove & Awards	Salons 1, 2, 3
9:15 a.m. – 9:30 a.m.	Coffee Break	Pre-function Area
9:30 a.m. – 11:00 a.m.	BREAKOUT SESSION	Multiple Rooms
11:00 a.m. – 11:15 a.m.	Coffee Break	Pre-function Area
11:15 a.m. – 12:45 p.m.	BREAKOUT SESSION	Multiple Rooms
12:45 p.m. – 1:45 p.m.	Lunch & Networking	Salons 1, 2, 3
1:45 p.m. – 3:15 p.m.	BREAKOUT SESSION	Multiple Rooms
3:15 p.m. – 3:30 p.m.	Break	Pre-function Area
3:30 p.m. – 5:00 p.m.	BREAKOUT SESSION	Multiple Rooms

AM BREAKOUT SESSIONS

9:30 A.M. – 11:00 A.M.

Session	Presenter	Location
A Comparison of Treatment Models: Harm Reduction vs. Abstinence	Stacy Chamberlain; Christina Brenner	Consulate I
Designing and Implementing Value-Based Care Pathways	Jeff Capobianco, PhD, LLP	Control Tower
Introduction to Genetic Testing in Psychiatry	Timothy Dellenbaugh, MD	Consulate III
KSDE & CMHC School Mental Health Pilot	Sue Murnane, LMSW	Consulate III
Timely Topics in Healthcare Policy	Secretary Laura Howard Kyle Kessler, MPA Kim Nelson, LAC, MPA	Consulate II

9:30 A.M. – 12:45 P.M.

Session	Presenter	Location
DLA 20 Training of Trainers – AM Session	Julie Arment	Sedgwick
Learn to Pause SM Mindfulness Training	Kim Colegrove	Media Theater

Thursday, September 12, 2019

AM BREAKOUT SESSIONS

11:15 A.M.–12:45 P.M.

Session	Presenter	Location
2019 Legislative Recap & 2020 Forecast	Moderator – Kyle Kessler, MPA	Consulate II
Employment Law Update	Foulston Siefkin, LLP	Consulate III
Resources to Support Tobacco Cessation	Rick Cagan, BA Elizabeth Ablah, PhD, MPH Matthew Schrock, MSW	Control Tower
School Mental Health Implementation Components	Cherie Blanchat, LSCSW Christin Sheldon, LMSW	Salon 4
Stand Together to Rethink Technology (START)	Tim DeWeese, LMSW Krista Boan Tracy Foster	Consulate I

PM BREAKOUT SESSIONS

12:45 P.M. – 3:15 P.M.

Session	Presenter	Location
Financial Managers Roundtable	Moderator – Jerry McDonald	Consulate III

1:45 P.M. – 3:15 P.M.

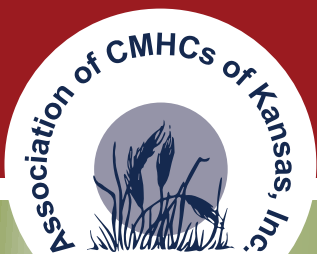
Session	Presenter	Location
Diagnosis of Gambling and Emergence of Gaming Disorder	Misti Mustain, LMLP, LCAC, KCGCII	Salon 4
Emerging Treatment Trends in Mental Health	Laura Sidlinger, DNP, APRN-C	Media Theater
Mental Health and Jails Stakeholder Panel	Moderator – Kyle Kessler, MPA	Consulate II

1:45 P.M. – 5:00 P.M.

Session	Presenter	Location
Child Psychopathology	Abby Callis, PsyD	Consulate I
DLA 20 Training of Trainers – PM Session	Julie Arment	Sedgwick
Peer Support Specialist Supervisor Training	Bailey Blair	Control Tower

3:30 P.M. – 5:00 P.M.

Session	Presenter	Location
MHTTC Overview	Joe Evans	Salon 4
SAMHSA Update with a Regional and National Look at Suicide	Kim Nelson, LAC, MPA	Consulate II
Telepsychiatry: The Solution to the Shortage of Clinicians	Jon Evans, MA Kathy Mosher	Consulate III
Yellow Ribbon Suicide Prevention Program	Richard Falcon	Media Theater



40th Annual Conference for Behavioral Health

www.acmhck.org

Friday, September 13, 2019

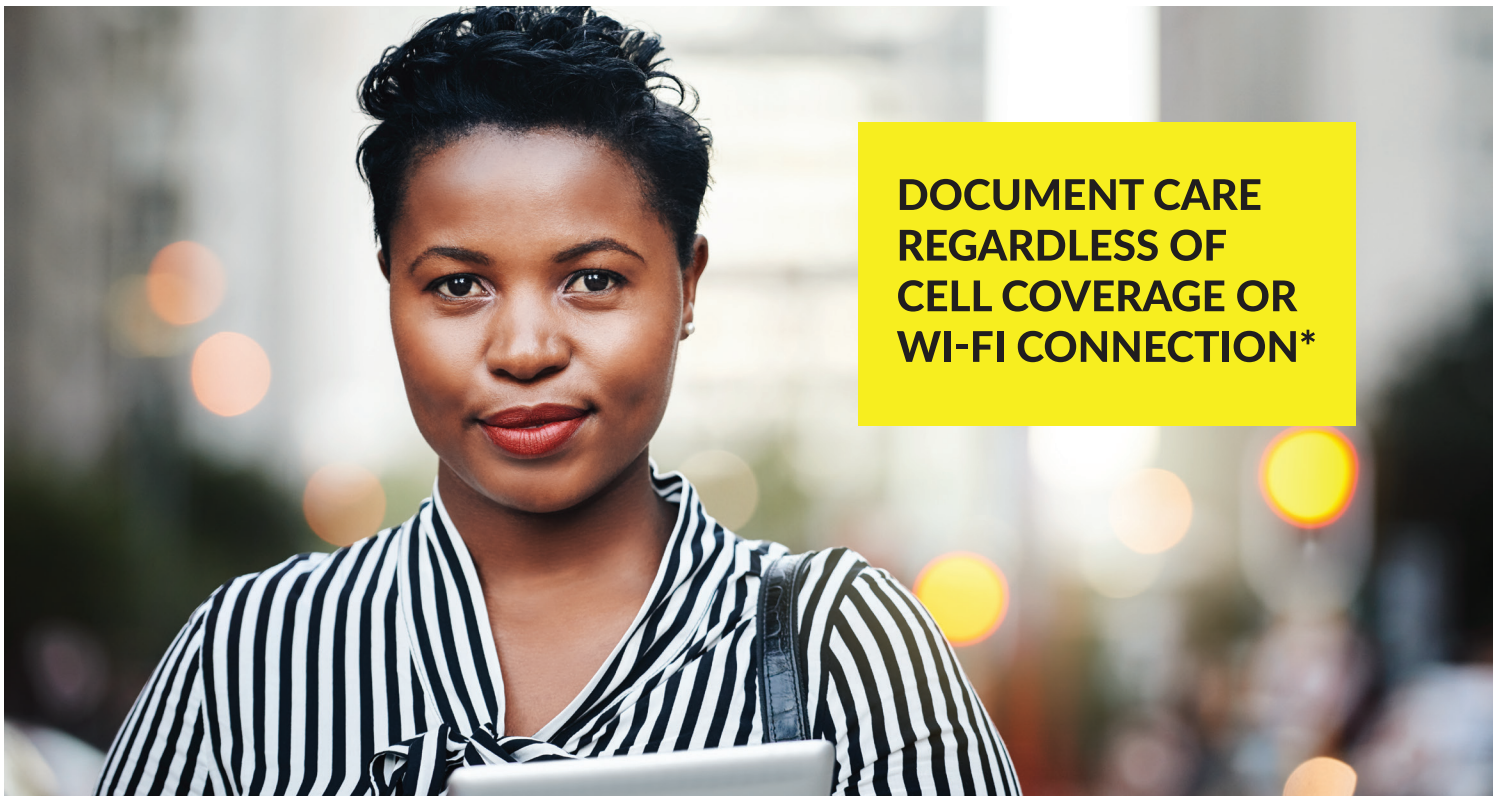
SCHEDULE-AT-A-GLANCE

Time	Session	Location
8:00 a.m. – 12:00 p.m.	Registration	Lobby
8:00 a.m. – 8:45 a.m.	Continental Breakfast	Salons 1, 2, 3
8:45 a.m. – 12:00 p.m.	BREAKOUT SESSIONS	Multiple Rooms
8:45 a.m. – 12:30 p.m.	Mental Health First Aid Instructor Summit	Consulate II
9:00 a.m. – 12:00 p.m.	OPEN MINDS Executive Seminar <i>Sponsored by Qualifacts</i>	Consulate I

BREAKOUT SESSIONS

8:45 A.M. – 12:00 P.M.

Session	Presenter	Location
Drug Trends and Vaping	Kevin Kufeldt, LCPC, LCAC	Consulate III
When Doing Right and Doing Good Become the Same Thing: Trauma-Informed Systems of Care, Professional Self-Care, and Ethics	David Barnum, PhD	Media Theater



**DOCUMENT CARE
REGARDLESS OF
CELL COVERAGE OR
WI-FI CONNECTION***

Experience superior EHR performance
Uniquely flexible | Highly configurable

*Results may vary.

qualifacts

**Your Insurance and Risk Management Solutions
Experts in the Behavioral Health Industry**



**CONRADE
INSURANCE GROUP**

*Empowerment and fulfillment through dedication
to each other, our work, and our customers.*

129 E Broadway
Newton, Kansas 67114

1-888-283-0096
ConradeInsurance.com



UnitedHealthcare Community Plan is proud to support the
Annual Conference for Behavioral Health.



Visit us online at:
UHCCommunityPlan.com



© 2019 United HealthCare Services, Inc. All rights reserved.
953-CST26735 8/19

It's not just KanCare, it's UnitedHealthcare.

Healthy Childhoods. Healthy Communities.

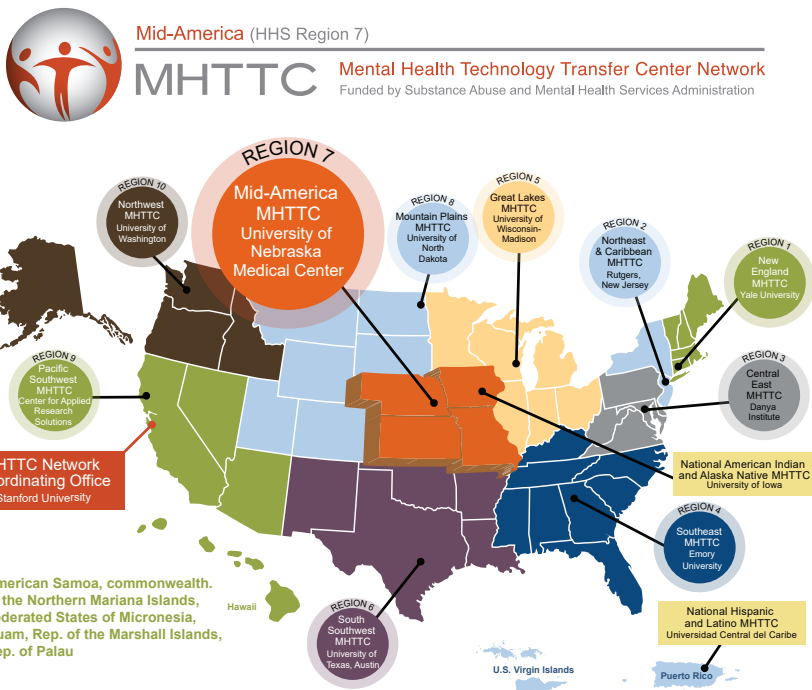
For communities to prosper, all children must have the opportunity to develop healthy brains. We help youth at our children's psychiatric hospitals and residential treatment programs in Kansas and Missouri achieve mental health wellness so they can embrace their full potential, build resilience and thrive.

Providing expert and compassionate treatment to youth ages 6 to 18 experiencing:

- Depression
- Anxiety
- Other mental health needs
- Childhood trauma
- Suicidal thoughts



www.kvchospitals.org | (913) 890-7468



Looking for Free Training in Behavioral Health? Call the Mid-America MHTTC!

Awarded to UNMC's Behavioral Health Education Center of Nebraska (BHECN) by the federal Substance Abuse and Mental Health Services Administration (SAMHSA Grant# H79SMO81769), the Mid-America MHTTC serves the training needs of mental/behavioral health providers across the four states of Missouri, Iowa, Nebraska, and Kansas.

A major focus for the MHTTC is training for the Integration of Behavioral Health into Primary Care.



Learn more at:
MHTTCnetwork.org/midamerica



This Is What 10x Looks Like.

Outcomes Management.
10x Easier.



REMARKABLE HEALTH

The Preferred Technology Partner of Mental Health Providers in Kansas

Booth #24



In it together

We're proud to support CMHCs of Kansas



aetna®

Aetna Better Health® of Kansas

AetnaBetterHealth.com/Kansas

KS-18-09-08



You change lives for the better.

We can help.

Pharmacy and telepsychiatry services for those in the behavioral health and substance use disorder treatment communities.

Learn more at www.genoahealthcare.com

Integrated EHRs, services & solutions for Behavioral Health & Addictions

Proudly serving providers in Kansas since 1968



www.ntst.com

**EHR built for insight.
Designed to evolve with your organization.**

Streamline builds innovative technology empowering people who improve behavioral health and quality of life of those in need.

**Anytime. Anywhere. Anyone.
SmartCare™**



streamlinehealthcare.com

IT'S

OKAY

IF YOU'RE

NOT OKAY

JOHNSON COUNTY
Mental Health

**A mental health podcast with personality,
available on Apple, Google, Podbean and
jocogov.org/podcasts.**



sales@comp-one.com
800-886-1123

HELPING EMPLOYERS SUCCEED:

ComplianceOne partners with you to design solutions to meet your specific needs. We strive to provide quality services and programs at a reasonable cost.

OUR SERVICES:

- ***Background Check Screening Services***
 - ***User Friendly Online Portal***
 - ***Cost Effective***
- ***Third-Party Administration Services***
 - ***Drug and Alcohol Testing Programs***
 - ***Consortium Management***
- ***Employee Assistance Program***
 - ***Wellness Program***
 - ***Professional, Efficient Referral Services***
- ***On-Site Mobile Collection Services***



Contact us today for more information:

sales@comp-one.com

800-886-1123

www.comp-one.com

READY TO SOLVE YOUR RECRUITMENT CHALLENGES?

innovaTel can provide
your clinic with
psychiatric clinicians
via telepsychiatry.



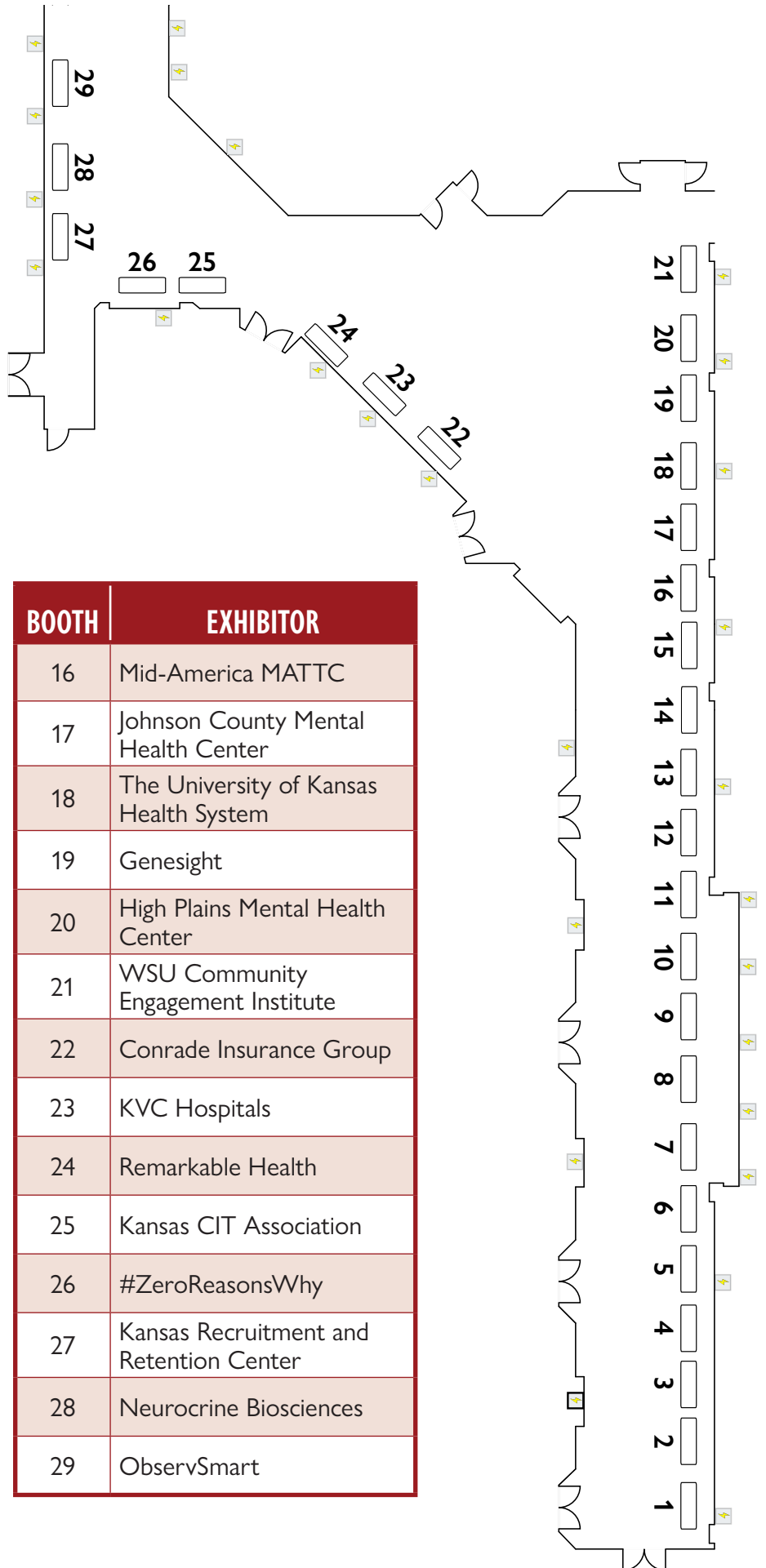
Our network for your clinic.
866.492.7597 | www.innovatel.com



innovaTel
telepsychiatry

re-imagining psychiatric care

Exhibitor Map & List



BOOTH	EXHIBITOR
1	Allergan
2	Dominion Diagnostics
3	Iris Telehealth
4	Credible
5	Cottonwood Springs
6	Streamline
7	Sunflower Health Plan
8	Compliance One
9	innovaTel
10	Aetna
11	Qualifacts
12	UnitedHealthcare
13	Genoa Healthcare
14	Netsmart
15	Mid-America MHTTC

BOOTH	EXHIBITOR
16	Mid-America MATTC
17	Johnson County Mental Health Center
18	The University of Kansas Health System
19	Genesight
20	High Plains Mental Health Center
21	WSU Community Engagement Institute
22	Conrade Insurance Group
23	KVC Hospitals
24	Remarkable Health
25	Kansas CIT Association
26	#ZeroReasonsWhy
27	Kansas Recruitment and Retention Center
28	Neurocrine Biosciences
29	ObservSmart

Thank You to Our Sponsors

PLATINUM



GOLD



WELCOME RECEPTION

REFRESHMENT BREAK



SILVER



BRONZE





534 S. Kansas Ave.
Suite 330
Topeka, KS 66603
785-234-4773
www.achhck.org



#KSBHCON19